



**University of
Zurich^{UZH}**



**Network
for Evaluation
of One Health**

Evaluating One Health-Ness

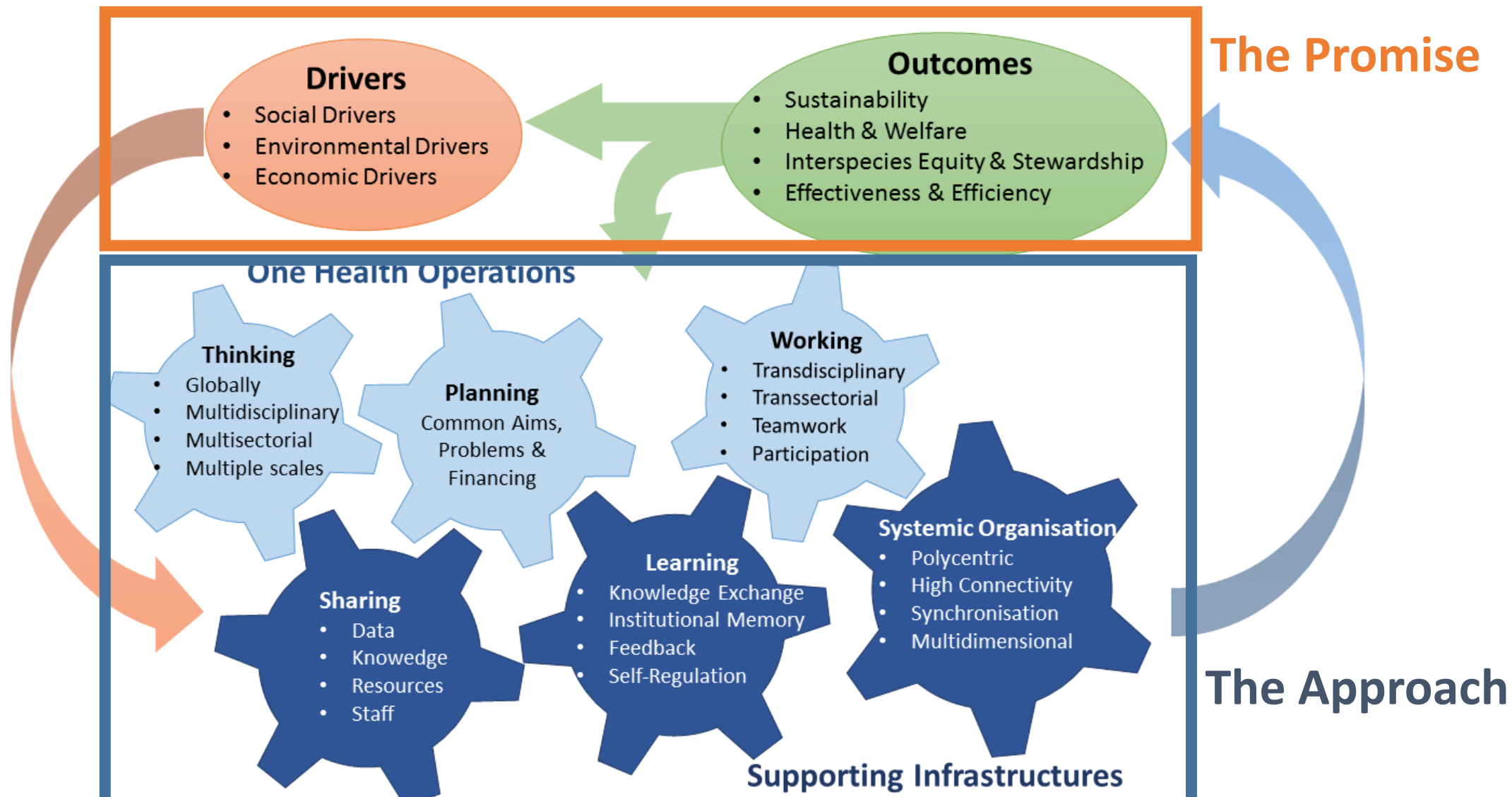
NEOH Training School, June 2016, Novi Sad

Simon Rüegg, WG1 co-leader

NEOH is supported by

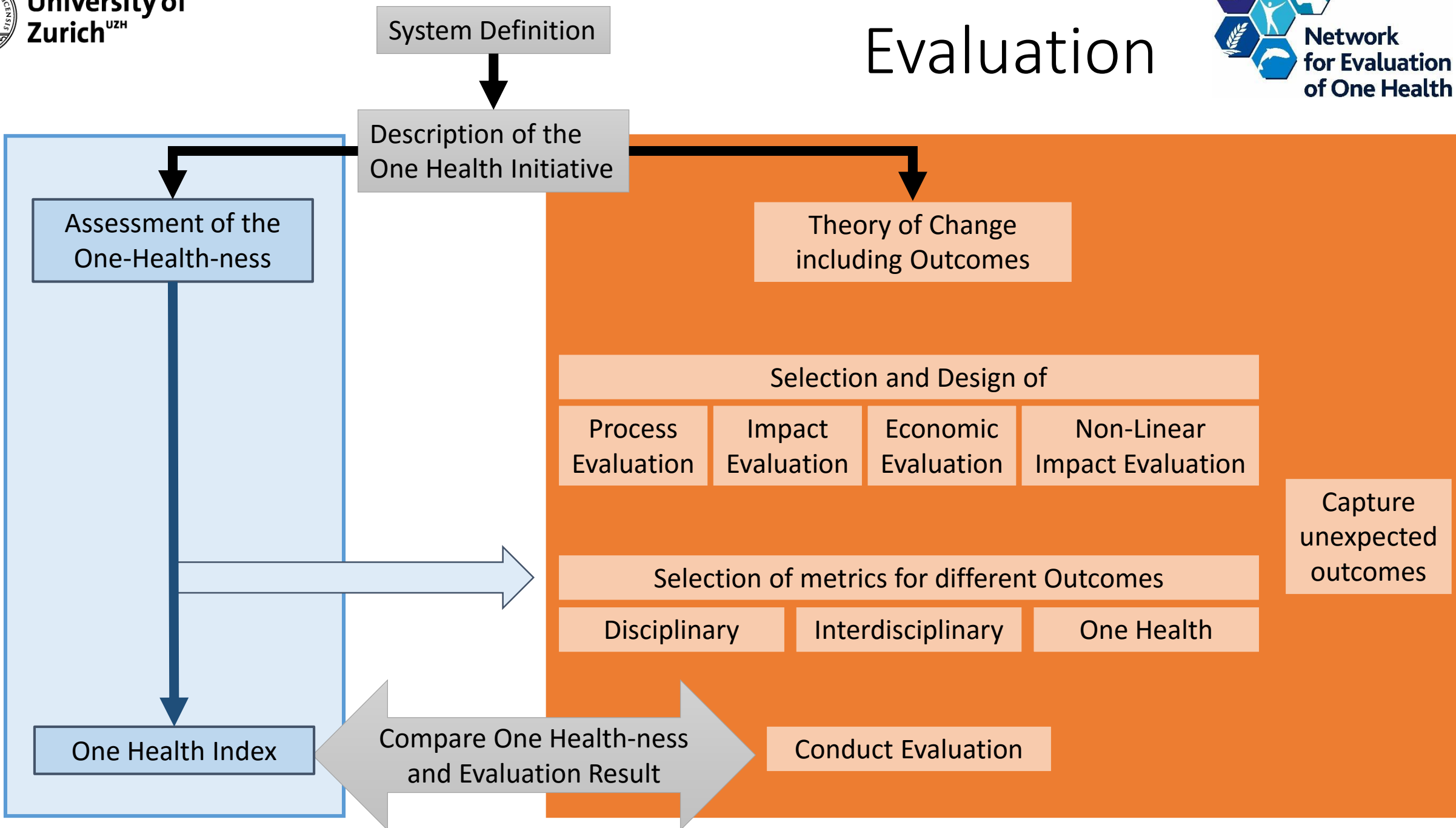


One Health Characteristics



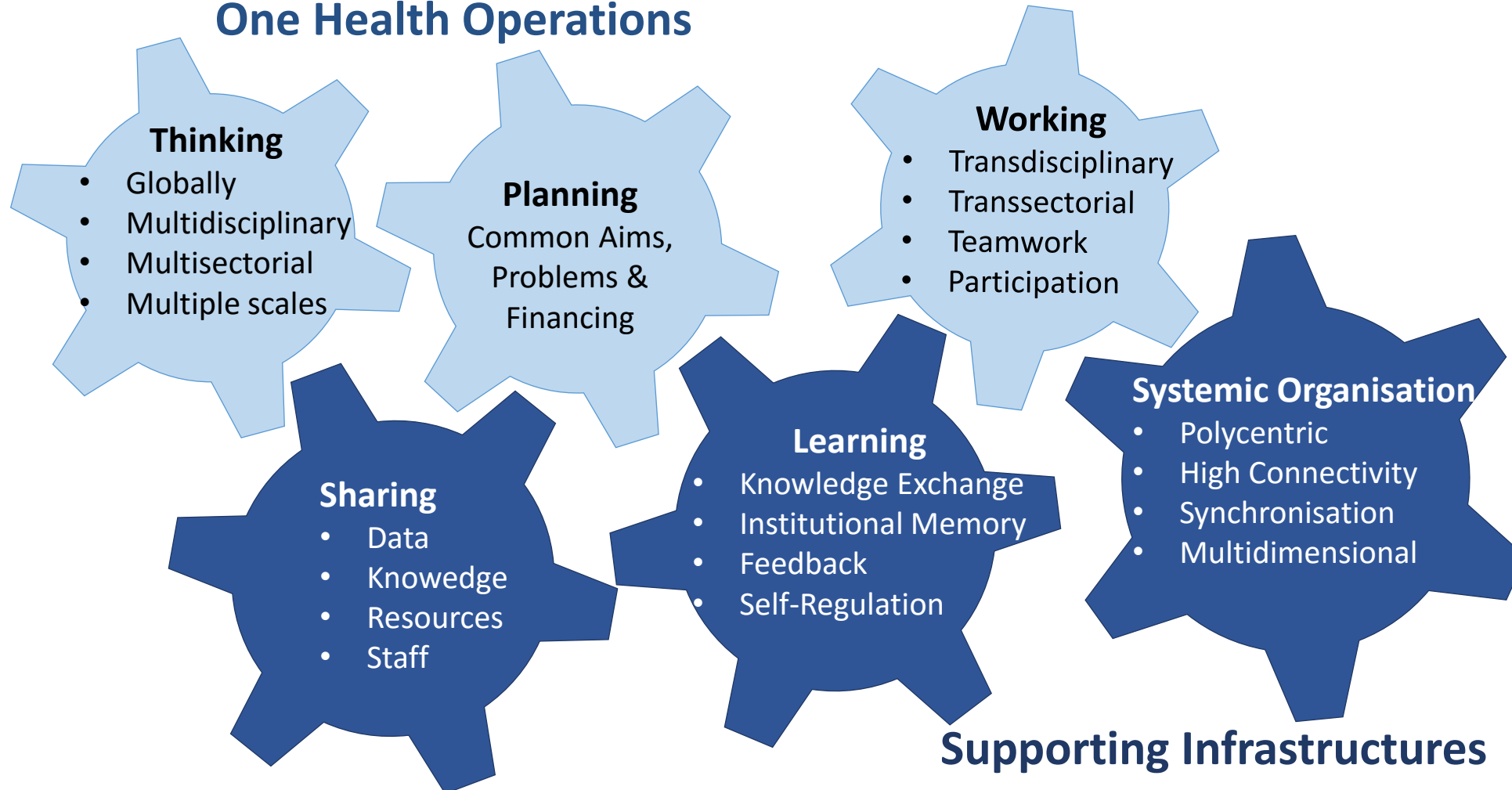


Evaluation



The One Health Approach

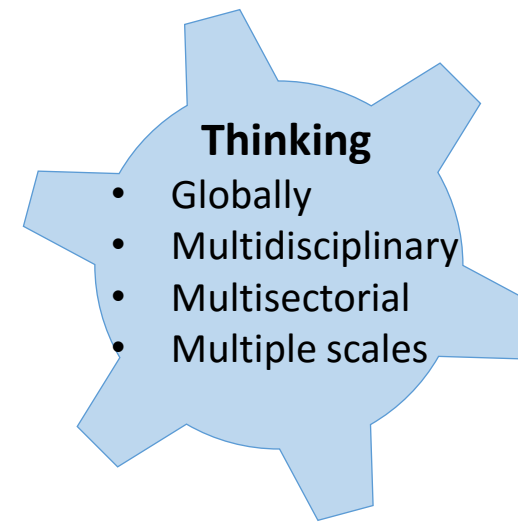
One Health Operations





One Health Thinking is

- Comprehensive, holistic
- Interdisciplinary, cross-sectorial
- Multi-scalar
- Inclusive, tolerant, respectful
- Preventative





Assessing One Health Thinking

- Dimensions
- Scales
- System Thinking
 - Events
 - Patterns
 - Structures
- Causal chain
 - Localise initiative in relation to problem causes and consequences of the system
- Questionnaire



Assessing One Health Planning



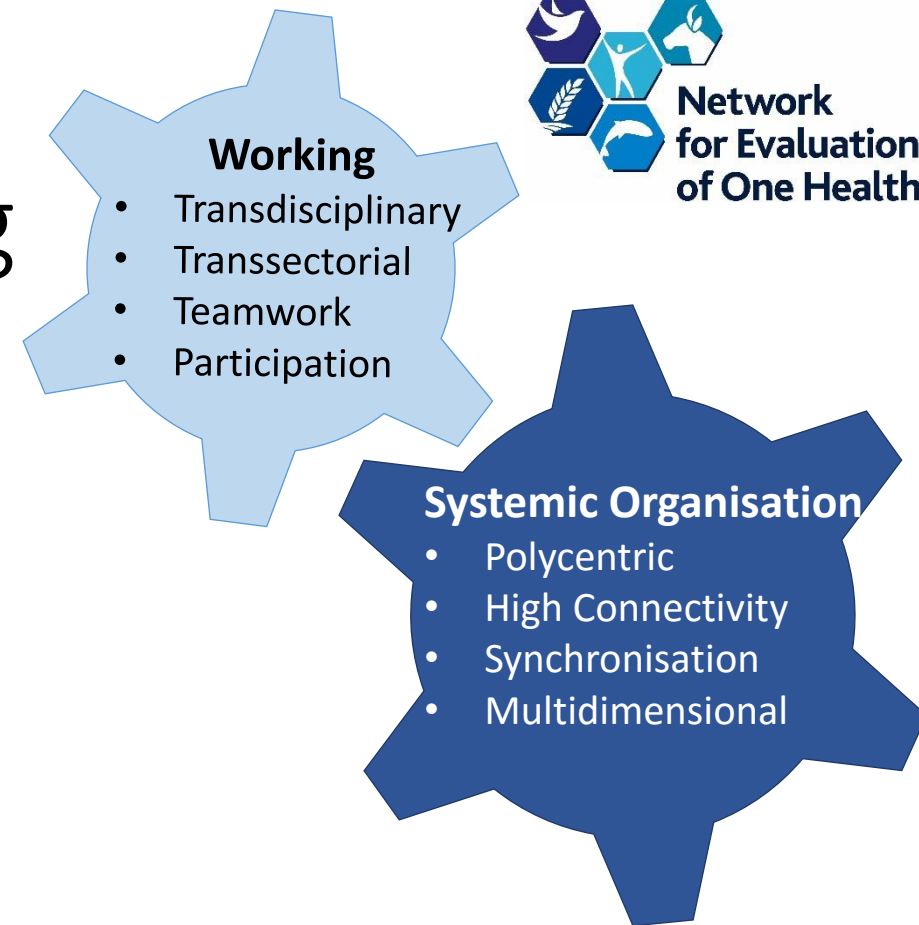
Task	Stakeholder	Responsibility	Authority	Means	Match
Collecting blood samples at the local slaughterhouse	Slaughterhouse personnel	Holding animal	Handling animal	1 person	1
	Veterinarian	Taking sample	Medical intervention	1 person, 1 car, sampling material	1
...			



Assessing One Health Working

- Transdisciplinarity
- Leadership

- Broadness of the initiative
- Integration of disciplines and sectors
- Reflection and learning
- Efficiency and effectiveness of problem solving
- Management, social and leadership skills
- Team structure
- Actors and competences
- Problem formulation, goals, focus and criteria of success





Evaluation of Learning

- Knowledge gathering, storage and distribution
- Working environment, technology, reward system, policy
- Learning level
 - Individual Learning
 - Team Learning
 - Organisational Learning
- Environment
 - Direct environment
 - General context





Evaluation of Sharing

- Data and Information
- Stakeholder involvement
- Internal and external sharing mechanisms
- Resources for sharing
- Sharing agreement
- Data
 - Quality
 - Storage
 - Accessibility
- Method of sharing
- Resilience to change
- Use of data in learning





Questions?

Thank you for your attention