



**Universität
Zürich**^{UZH}

TRANSDISCIPLINARITY: CONTRIBUTIONS TO ONE HEALTH SURVEILLANCE

ISDS Pre-Conference Training: Operationalizing One Health Surveillance

Martin Hitziger, Univ. Zurich (Dr. sc. ETH Zurich, M. Sc. LSE London, M. Sc. Univ. Bayreuth)
Atlanta, 6th December 2016

Transdisciplinarity =

Interdisciplinary & systemic perspective

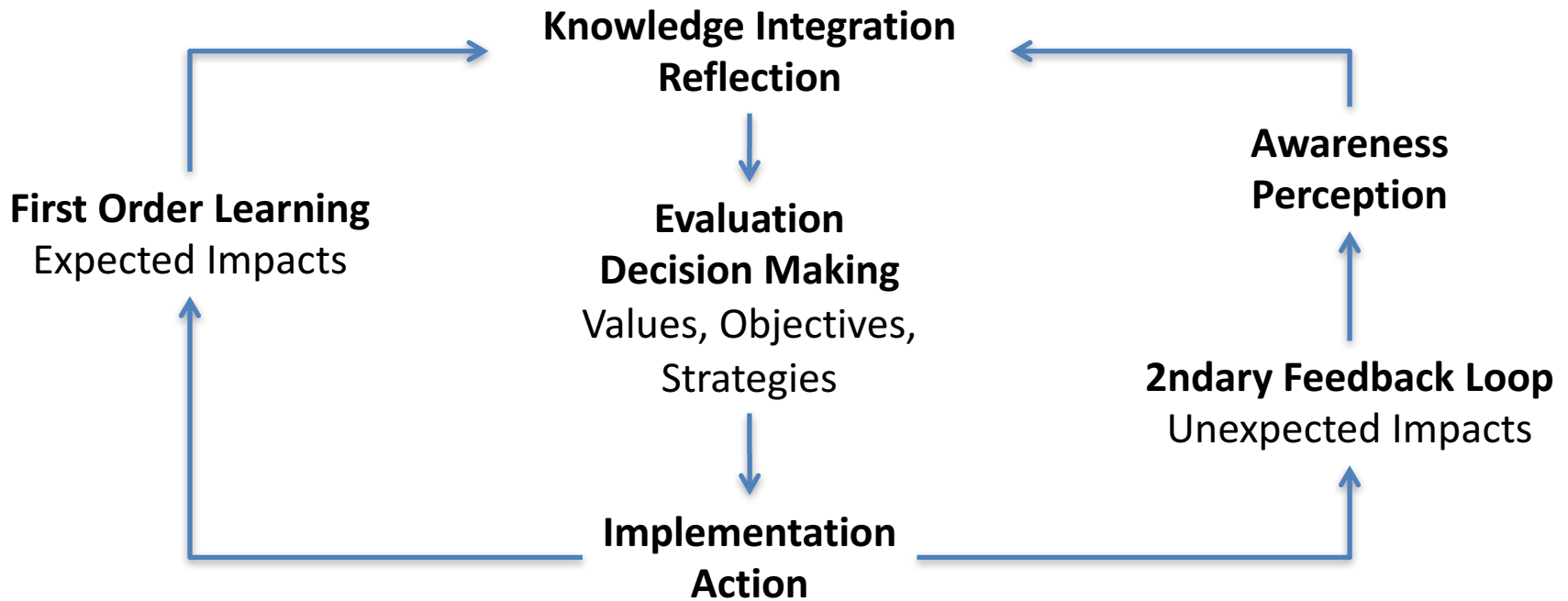
+

Participative approach

+

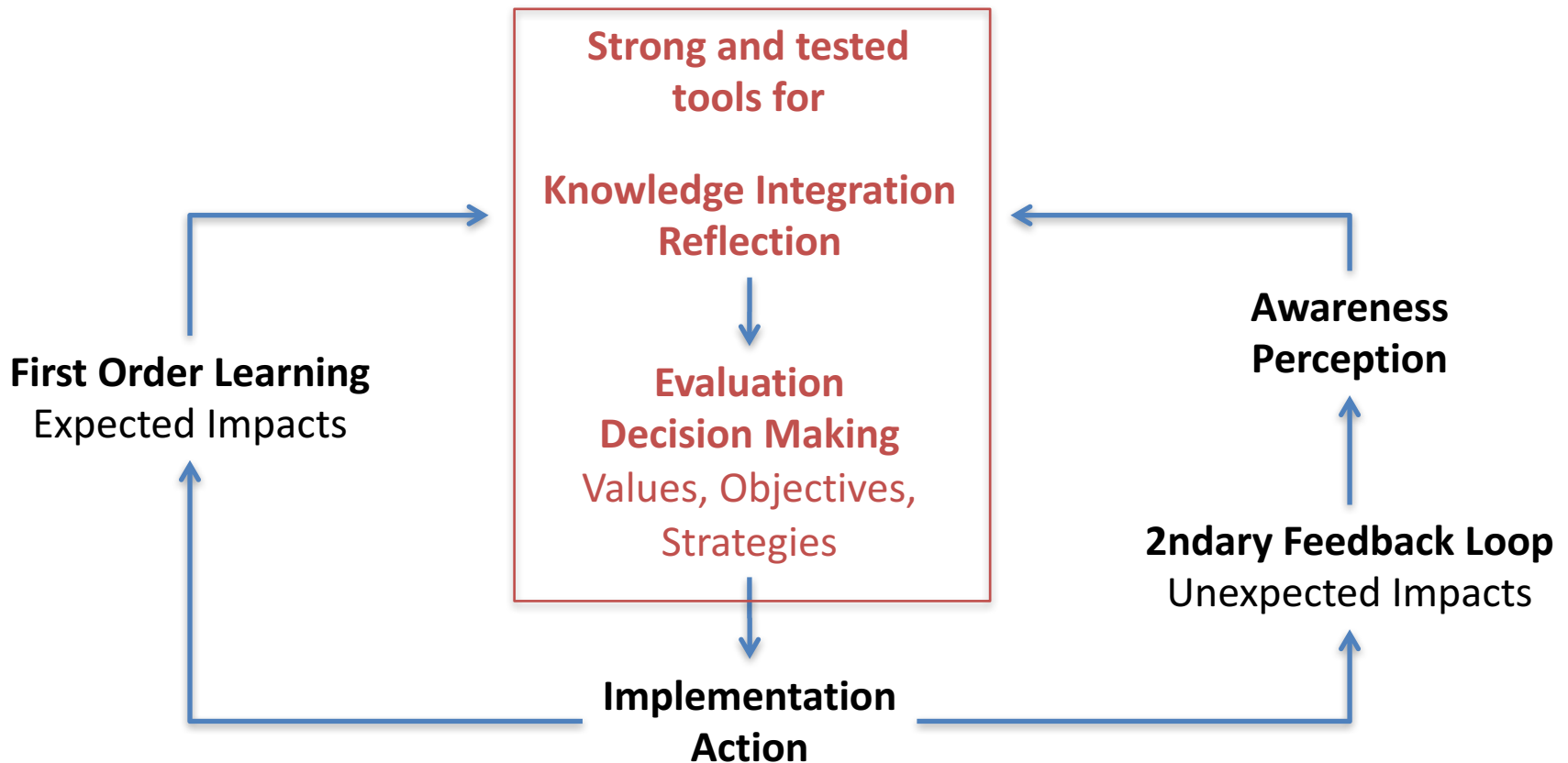
Joint governance & implementation

What info do you need? Who do you get it from?
→ **Interdisciplinary & systemic perspective !**



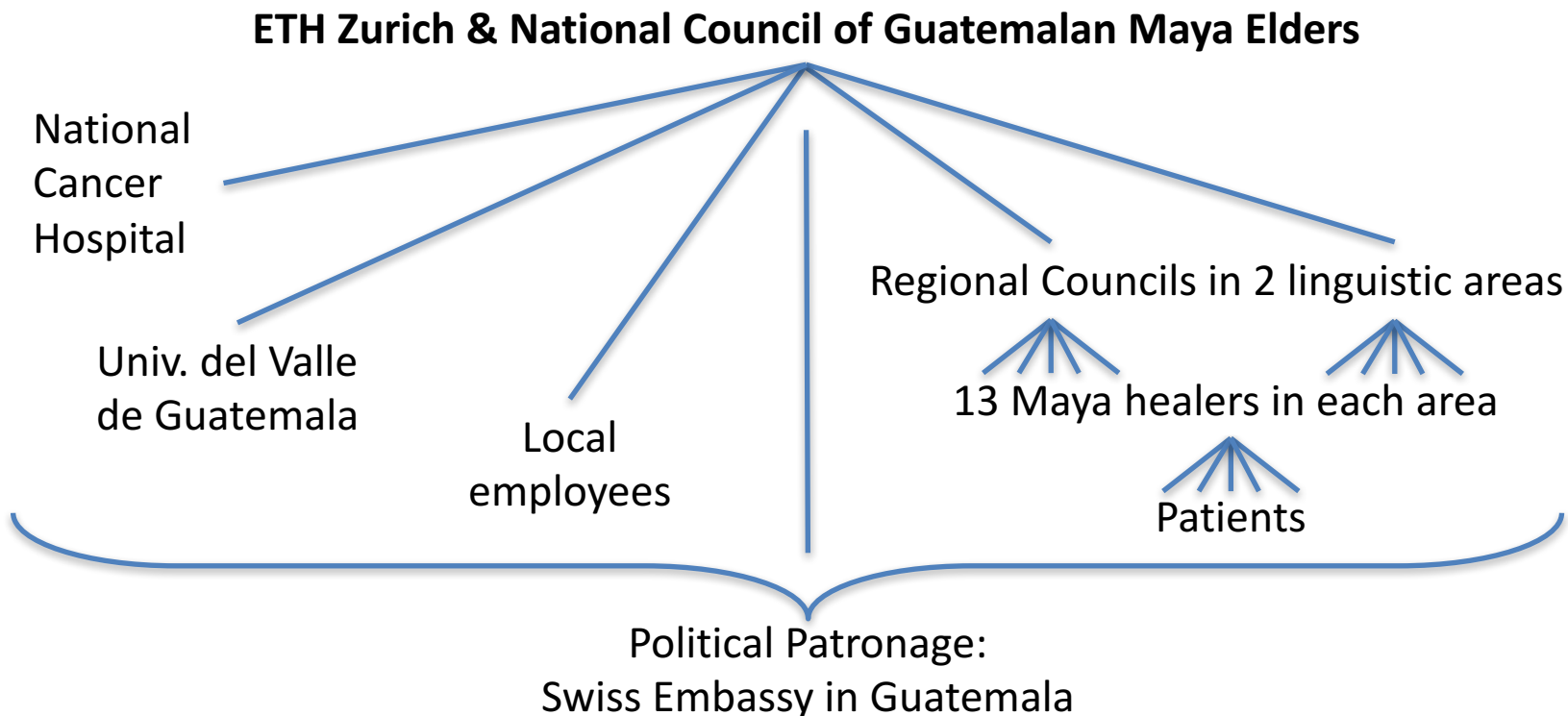
Inspired by Scholz 2011

What info do you need? Who do you get it from?
→ **Interdisciplinary & systemic perspective !**



Inspired by Scholz 2011

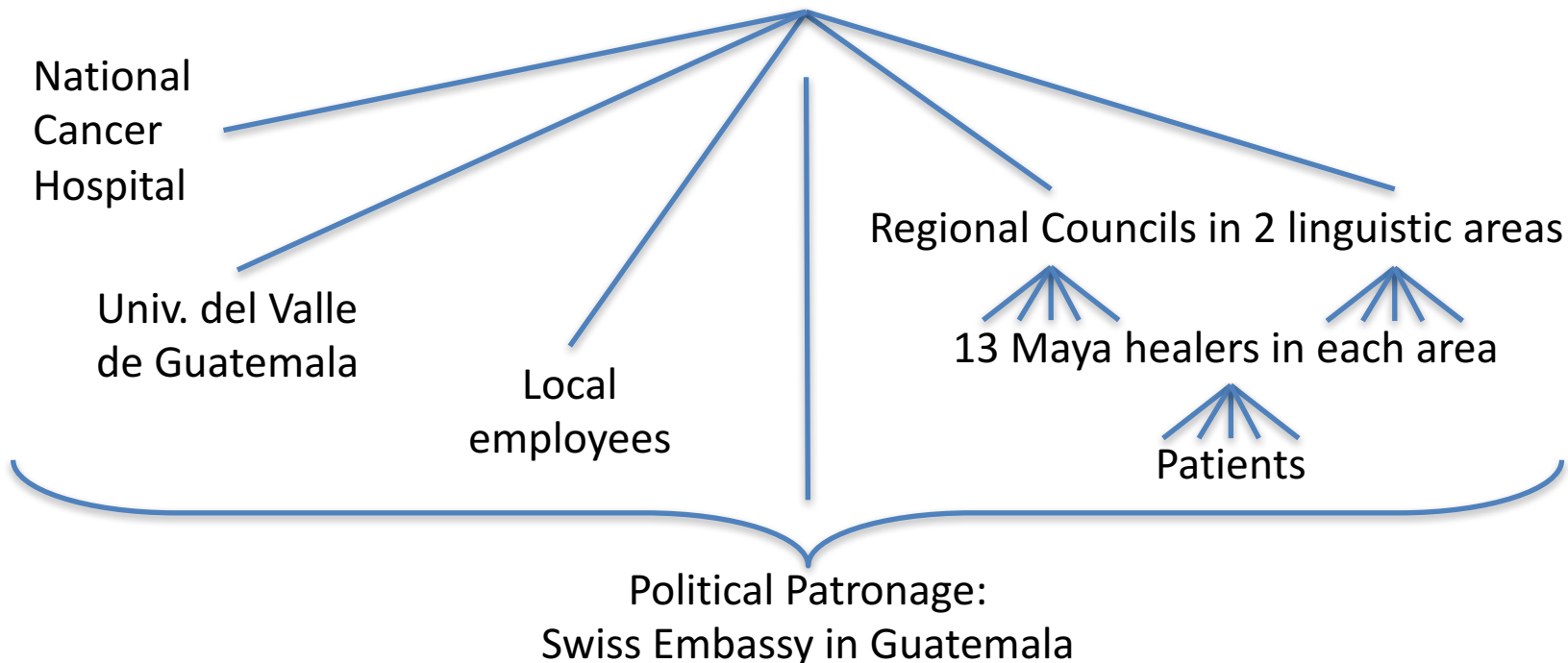
How are decisions made? Who decides? → Participatory approach!



How are decisions made? Who decides? → Participatory approach!

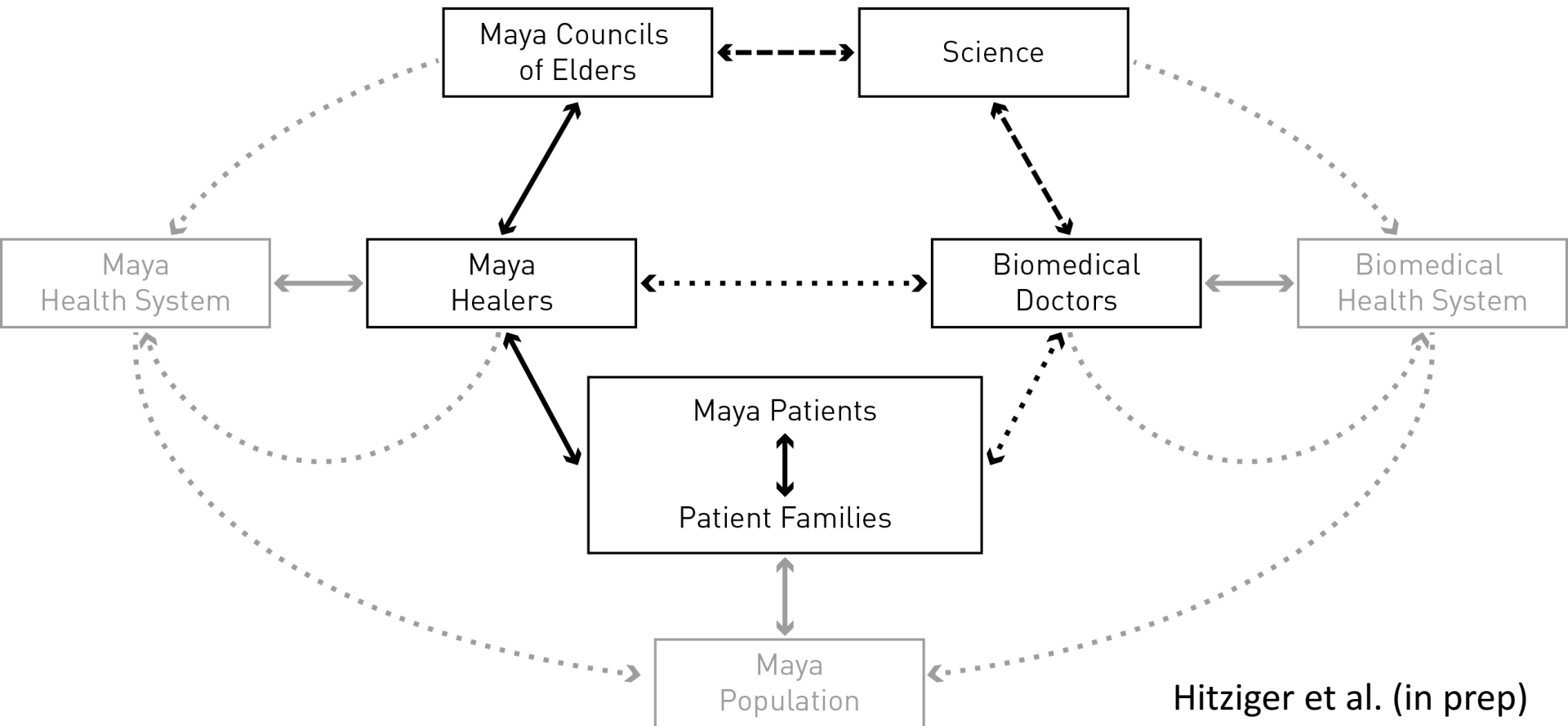
Engages INSTITUTIONS, negotiates INTERESTS, integrates PERSPECTIVES

ETH Zurich & National Council of Guatemalan Maya Elders



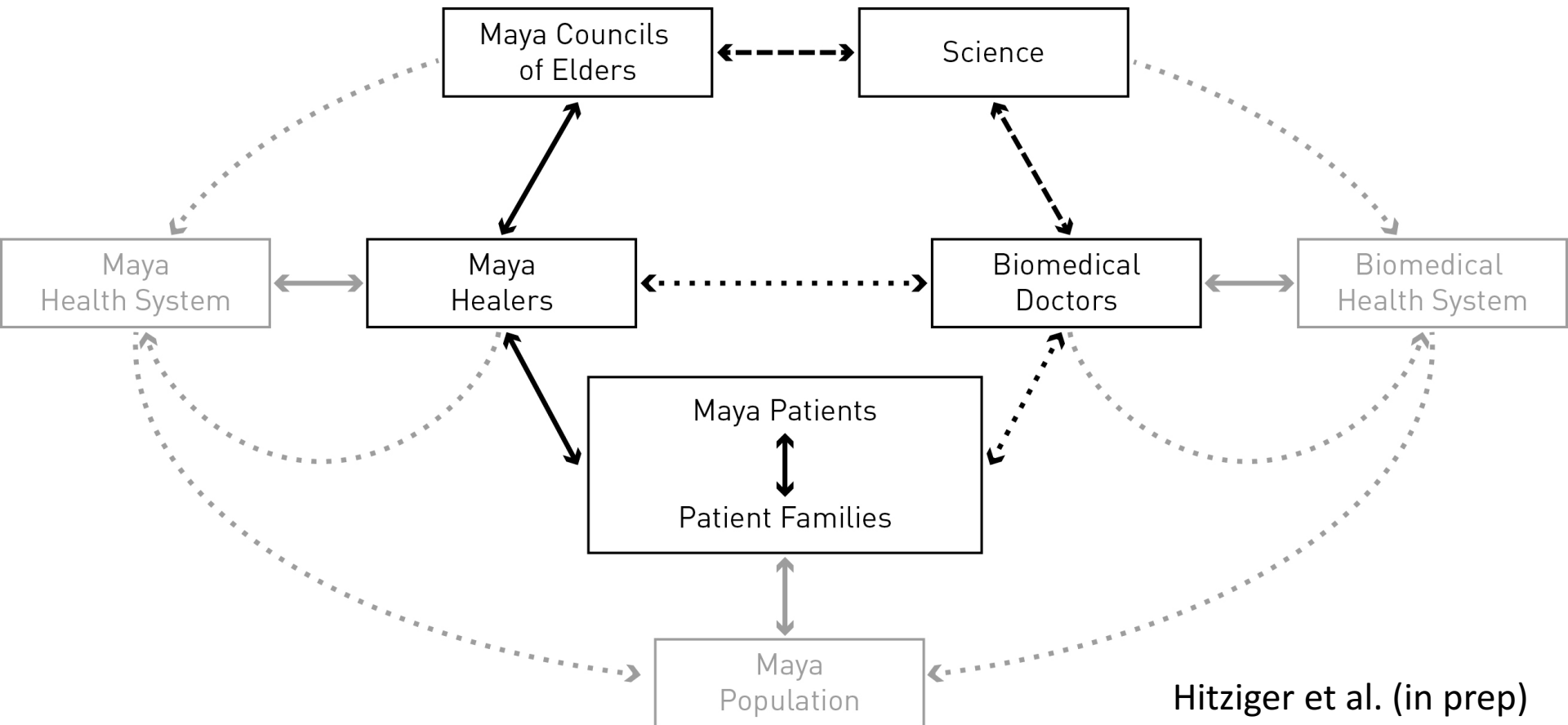
How are decisions implemented? Who acts?

→ **Joint governance & implementation!**



How are decisions implemented? Who acts? → **Joint governance & implementation!**

Empowers NETWORKS, builds TRUST, bridges KNOWLEDGE SYSTEMS



Relevance for One Health Disease Surveillance

Science-Policy interface in ONE HEALTH and sustainability ...

- Is concerned with complex interactive systems
- Involves both subjective and objective knowledge
- Entails conflicts of interests and power differentials
- Cross-cuts institutional and educational modes of thought
- ...

Transdisciplinary approaches can contribute to ...

- Strengthen networks
- Assure equitable representation of perspectives & interests
- Facilitate open & constructive dialogue
- Guide knowledge integration
- Legitimize policy
- Enable collective action

However:

Methods for evaluating transdisciplinary initiatives are to be developed!

References

Hitziger et al. (in prep): Patient-centered boundary mechanisms to foster intercultural partnerships in health care: a case study in Guatemala.

Scholz RW (2011): Environmental Literacy in Science and Society: From Knowledge to Decisions. Cambridge University Press, Cambridge, UK.

Workshop

What **info** do you need?

Who do you get it from?

How are **decisions** made?

Who decides?

How are decisions implemented?

Who **acts**?

How does it work at the moment?

How do you think transdisciplinary
methods could be useful?

30 min group discussion

2 min presentation each