



**Network
for Evaluation
of One Health**

Network for Evaluation of One Health - NEOH

Stakeholder meeting Brussels, 16th of February 2016

Barbara Häslér, bhaesler@rvc.ac.uk

LCIRAH

Leverhulme Centre for Integrative
Research on Agriculture and Health

RVC

**Royal
Veterinary
College**

University of London

cost
EUROPEAN COOPERATION
IN SCIENCE AND TECHNOLOGY

Cost is supported by the EU Framework
Programme Horizon 2020



The challenges



- Malnutrition & food safety
 - Double burden of malnutrition; food systems that deliver the wrong diets



- Emerging zoonotic diseases
 - Boom in global demand for animal products creates new risks



- Endemic infectious disease, zoonoses and antimicrobial resistance
 - Greatest human and animal health burden



- Food production under environmental change
 - Livestock production as a major contributor to greenhouse gas emissions

One Health

A paradigm that addresses complex challenges to promote the health and well-being of all species and the environment through the integration of relevant sciences at systems level

Can it provide solutions?

The dilemma



- One Health intuitively appealing
- Multiple benefits and added value perceived and described

What's lacking

- Not mainstream (yet)
- No systematic resource allocation

What's needed

- **Standardised methods, approaches and data to evaluate One Health activities**
- Robust evidence base for informed decision-making and resource allocation

Our vision

To develop and use methods and frameworks
for improved One Health decision making



Our goals

1. To develop a robust and standardised evaluation approach (WG1)
2. To evaluate and compare existing One Health initiatives (WG2 and WG3)
3. To involve decision-makers in network activities (WG4)
4. To create the interdisciplinary network required to address the evaluation of One Health (cross-cutting)



Our approach

WG1

Framework

Assess frameworks
Identify metrics
Define approach

Index

Inputs to One Health
Output measures

Protocol

Methods, data,
analysis and reporting

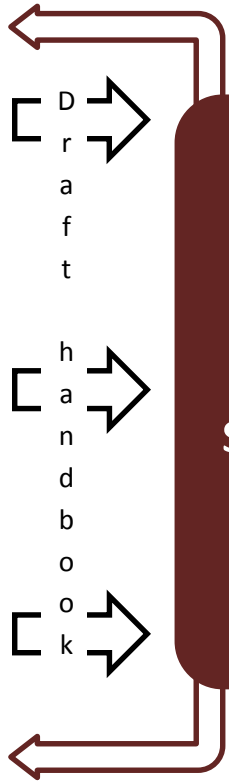
WG2

Case studies

WG3

Meta-analysis

Handbook
Conference
Publication



Stakeholder engagement, dissemination and policy

WG4

0

13

26

48

Our network



B. Häslér
RVC



M. Betson
RVC



J. Rushton
RVC



K. Rich
NUPI



L. Guardabassi
UCPH



L. Rosenbaum-N.
UCPH



S. Kadiyala
LSHTM



E. Fèvre
UoL, ILRI



M. McIntyre
UoL



L. Alban
LF



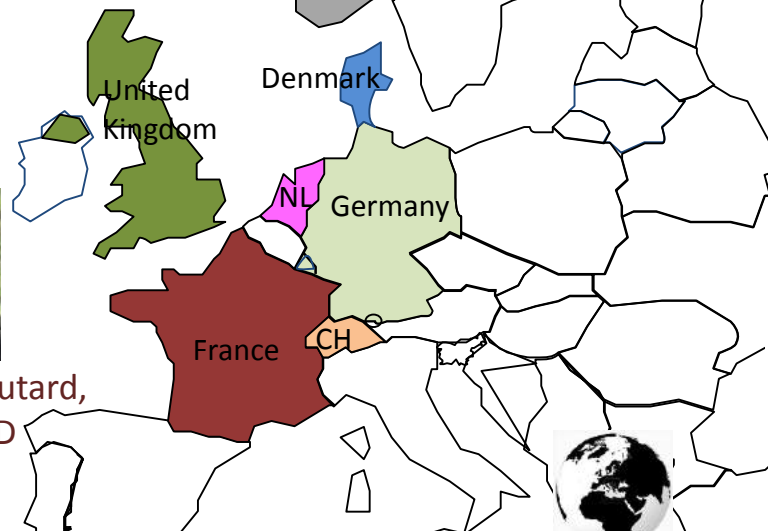
M. Vang Johansen
UCPH



L. Cornelsen
LSHTM



F. Goutard,
CIRAD



Norway

United Kingdom

Denmark

NL

Germany

France

CH



H. Hogeveen
WU



H. Saatkamp
WU



C. Ifeika Speranza
UoB



S. Ruegg
VetSuisse



K. Staerk
Safoso



F. Roth
STPH



J. Zinsstag
STPH



D. Grace
ILRI



A. Riviere
WHO



T. Carpenter
MU



C. Rubin
CDC



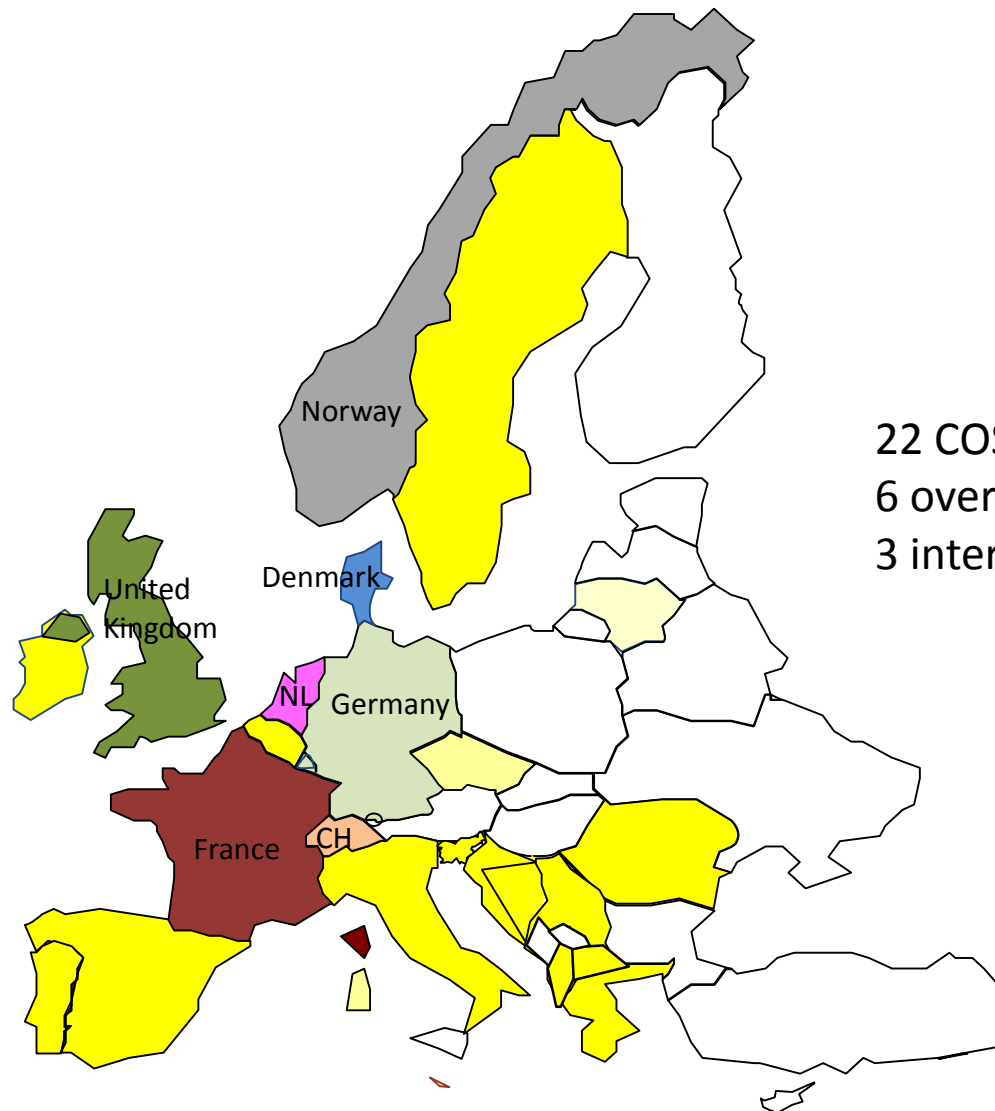
R. Kunkel
CDC



D. Adamson
UQ



Network for Evaluation of One Health



22 COST countries
6 overseas countries
3 international organisations

+ Israel, PAHO-WHO, FAO, ILRI, Massey University, Queensland University, SACIDS, Ecohealth Alliance

Networking tools



- Meetings and training
 - Meetings, Workshops, Conferences
 - Short Term Scientific Missions
 - Training Schools
- Dissemination tools
 - Website
 - Presentations at conferences
 - (Scientific) publications
- Networking with existing initiatives
- Internal communication
 - Alfresco document management and sharing system
 - MoU, Roadmap, Milestones, Factsheet, NEOH Consortium list

Action website

<http://neoh.onehealthglobal.net/>



Network
for Evaluation
of One Health



HOME +

ORGANISATION
AND PARTNERS
+

NETWORK
PROGRAMME +

EVENTS +

RESOURCES AND
LINKS

CONTACT & JOIN

Network for Evaluation of One Health (NEOH)

COST TD1404

Evaluation and Comparison of One Health Activities.

[Learn More](#)

LATEST NEWS:

[Climate Change](#)

[Proceedings of Pathways Kenya 2016](#)

[Upcoming events – 7 Jan](#)

[COST Petition:](#)

Network for Evaluation of One Health (NEOH)

COST Action TD1404

Funded by COST from the 17 Nov 2014 to 16 Nov 2018

Human health and well-being are increasingly affected by global challenges such as malnutrition, emerging and endemic zoonotic diseases, antimicrobial resistance and climate change. A One Health approach has been proposed to tackle the challenges through accepting that their complexity requires interdisciplinarity.

Several One Health initiatives have been implemented, such as the establishment of cross-sectoral coordination, communication and data sharing mechanisms, but no standardised methodology exists for quantitative evaluation of One Health activities. Therefore the Network for Evaluation of One Health (NEOH) aims to enable future quantitative evaluations of One Health activities and to further the evidence base by developing and applying a science-based evaluation protocol in a community of experts. (See our [Memorandum of Understanding](#) for more information).

Kick-off meeting – Management committee and working group meetings London, UK, January 2015



Working group 1 meeting and training school on evaluation

Cluj, Romania, June 2015



Short term scientific missions



[HOME +](#) [ORGANISATION AND PARTNERS +](#) [NETWORK PROGRAMME +](#) [EVENTS +](#) [RESOURCES AND LINKS](#) [CONTACT & JOIN](#)

Short term scientific missions

[Home](#) • [Short term scientific missions](#)

Reports from Previous Short Term Scientific Missions

[Simon Ruegg](#) [Barbara Haesler](#) [Massimo Canali](#) [Luís Carmo](#) [Walter Okello](#) [Laura Falzon](#)

3rd Call for Applications

Missions Occurring between 1 October 2015 and 30 April 2016

Deadline for applications 1 November 2015

[Download our Information Sheet](#)

The 3rd Call for STSM Applications for Missions is aimed at Inclusiveness Target Countries.

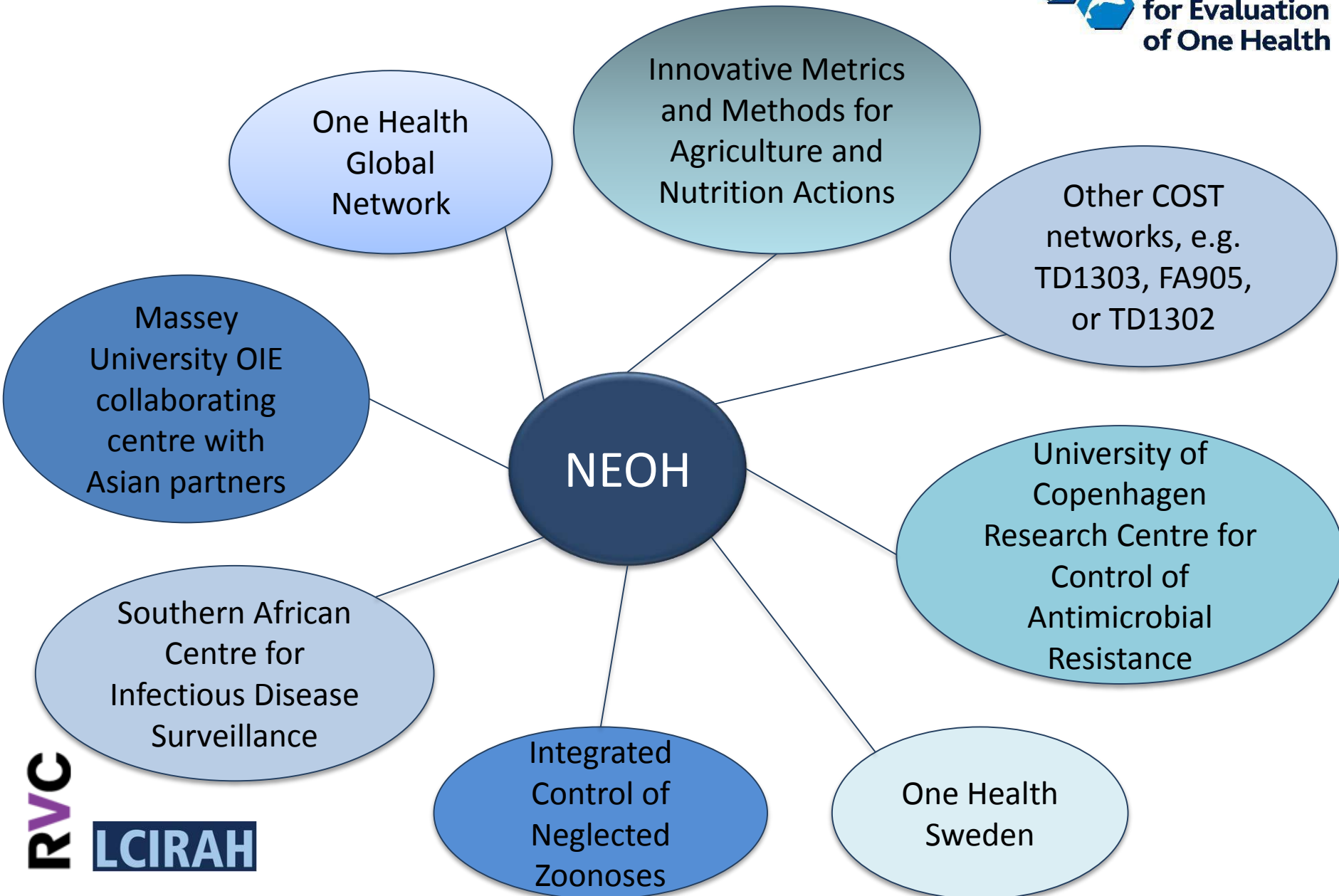
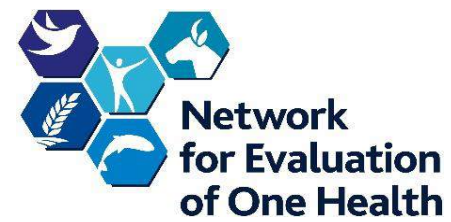
The overall aim of NEOH is to enable appropriate evaluations of One Health activities and hence comparison of initiatives as well as informed decision-making and resource allocation.

Short Term Scientific Missions (STSM) are aimed at supporting individual mobility and at strengthening the existing networks and fostering collaborations by allowing scientists to visit an institution in another participating COST country.

RVC

LCIRAH

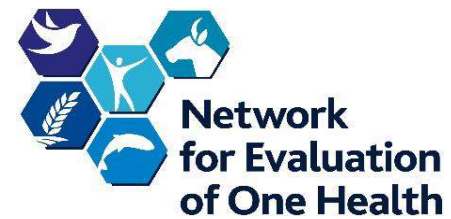
Network links



RVC

LCIRAH

The added value of NEOH



We want to deliver

- Robust and standardised evaluation methods
- “Single voice” communication on evaluation of One Health
- Cost-effective networking

to generate

- Enhanced tools for evidence-based policy making
- Improved resource allocation to health
- Greater human, animal and environmental well-being

Thank you for your attention!



Contact

Barbara Häslér

Lecturer in Agrihealth

Leverhulme Centre for Integrative Research on Agriculture and Health
(www.lcirah.ac.uk)

Royal Veterinary College (www.rvc.ac.uk) | Veterinary Epidemiology, Economics and
Public Health Group

Hawkshead Lane | North Mymms | Hatfield AL9 7TA | UK

bhaesler@rvc.ac.uk

Tel 1 +44 1707 667 037

Tel 2 +44 2079 272 518

Fax +44 1707 667 051

RVC

LCIRAH