



University of
Zurich^{UZH}



Network
for Evaluation
of One Health


The One Health evaluation framework

NEOH Workshop, 22.6.2017, Zürich

Simon Rüegg, WG1 co-leader

NEOH is supported by





Network for Evaluation of One Health (NEOH)

COST TD 1404

Working together to evaluate One Health.

[Learn More](#)

LATEST NEWS:

[Roadmap to a One Health agenda 2030](#)

[Report online: European OneHealth/EcoHealth workshop](#)

Network for Evaluation of One Health (NEOH)

COST Action TD1404

Funded by COST from the 17 Nov 2014 to 16 Nov 2018

Human health and well-being are increasingly affected by global challenges such as malnutrition, emerging and endemic zoonotic diseases, antimicrobial resistance and climate change. A One Health approach has been proposed to tackle the challenges through accepting that their complexity requires interdisciplinarity.

Several One Health initiatives have been implemented, such as the establishment of cross-sectoral coordination, communication and data sharing mechanisms, but no standardised methodology exists for quantitative evaluation of One Health activities. Therefore the Network for Evaluation of One Health (NEOH) aims to enable future quantitative evaluations of One Health activities and to further the evidence base by developing and applying a science-based evaluation protocol in a community of experts (See our [Memorandum of Understanding](#) for more information).

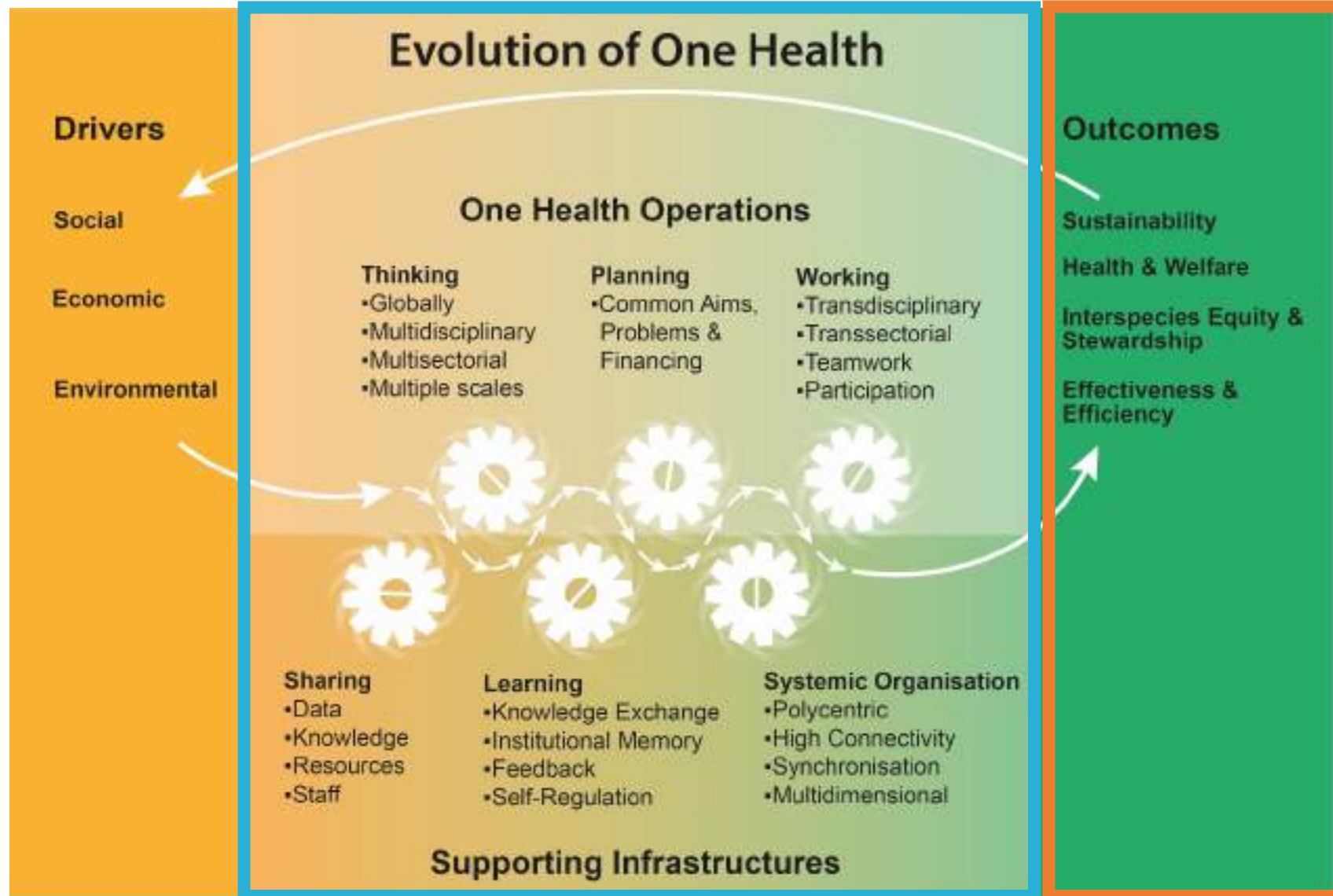
Working Groups



What is One Health?

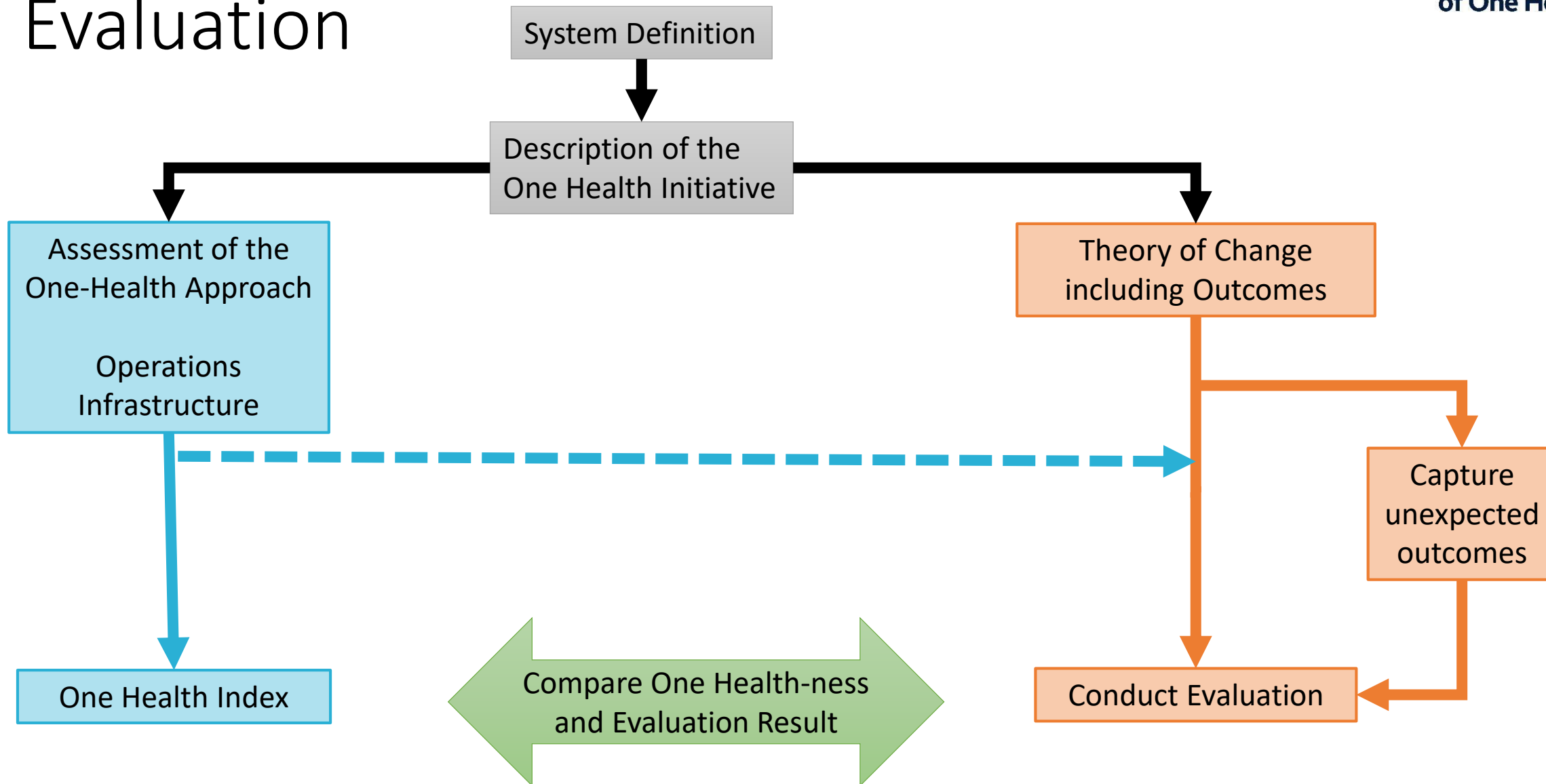
The Approach

The Promise





Evaluation





**University of
Zurich** UZH



**Network
for Evaluation
of One Health**

Evaluation of the One-Health Approach

Semiquantitative Questionnaire



System definition (prerequisite)

- Context
- Objective of the initiative
- Rationale of the initiative
- Dimensions of the context & initiative:
 - Dimension of life (cell – tissue – organ – organ system – ...)
 - Geographical space
 - Time
 - Legal dimension
 - Institutional/ political dimension
 - Socio-cultural spaces (faith, ethnicity, etc.)
 - Communication
 - etc.



Assessing One Health Thinking

- System Thinking
 - Focus on structures as origin of patterns and events
 - Consideration of networks
- Hierarchies
 - How good is the match between dimensions & scales of the system in which the initiative operates and the initiative itself?
- Causal chain
 - Localise initiative in relation to problem causes and consequences of the system



Assessing One Health Planning

- Verify that task, responsibilities and resources match beyond affiliation to disciplines and institutions.



Assessing One Health Working

- Transdisciplinarity
- Broadness of the initiative
- Integration of disciplines and sectors
- Problem formulation, goals, focus and criteria of success
- Efficiency and effectiveness of problem solving



Evaluation of Learning Infrastructure

- Knowledge gathering, storage and distribution
- Working environment, technology, reward system, policy
- Learning level
 - Individual Learning
 - Team Learning
 - Organisational Learning
- Environment
 - Direct environment
 - General context



Evaluation of Sharing (Data)

- Internal and external sharing mechanisms
- Resources for sharing
- Sharing agreement
- Data
 - Quality
 - Storage
 - Accessibility
- Method of sharing
- Resilience to change
- Use of data in learning



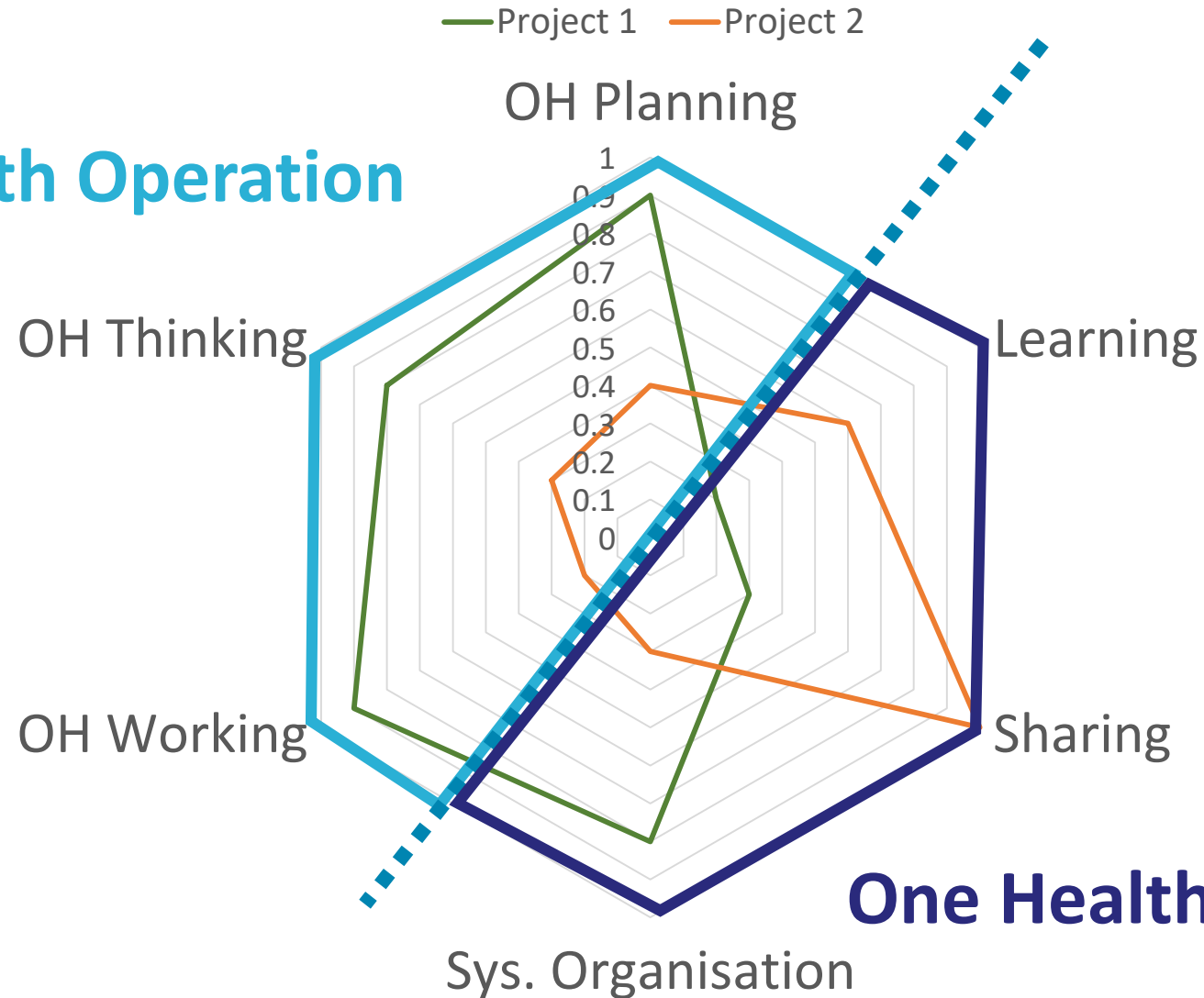
Systemic Organisation

- Adaptive Leadership
- Management, social and leadership skills
- Team structure
- Actors and competences
- Reflection and learning



One Health Index and Ratio

One Health Operation



One Health Infrastructure



Thank you for your attention